



Visitor Arrival Report–DECEMBER 2016 / CY2016

PLEASE NOTE: Due to a change in PVA data source, starting in FEBRUARY 2014, and until further notice, PVA will be reporting its visitor arrival statistics based solely on NATIONALITY. This report and subsequent reports hereafter, for comparison with year 2013 arrivals by Market Segments will reflect the changes from Residency to NATIONALITY. The difference however small will be noticed when compared to the already published YEAR 2013 report by Residency. Over All total number of visitor arrivals will remain the same.

- **Overall:** For the month of DECEMBER 2016, visitor arrivals to Palau (excluding residents, students, employments, flight crews and transits) totaled 9,872 representing a decreased of 2,707 (-21.52%) compared to DECEMBER 2015 with 12,579 visitor arrivals. PRC continues to be the biggest sourcing market with a market share of 38.44% of total arrivals.

		DECEMBER 2016	Market Share %	Visitor IYA	Market Share %	DECEMBER 2015	Share IYA
1	PRC-China	3,493	35.38%	63	44.02%	5,537	80
2	Japan	2,794	28.30%	85	26.18%	3,293	108
3	Korea	1,195	12.10%	101	9.39%	1,181	129
4	ROC-Taiwan	790	8.00%	82	7.64%	961	105
5	N. America	760	7.70%	96	6.30%	792	122
6	Europe Total	491	4.97%	122	3.21%	404	155
	Other	349	3.54%	85	3.27%	411	108
	Grand total	9,872	100.00%		100.00%	12,579	

Key Markets

- People’s Republic of China (China) with 3,493 arrivals in DECEMBER 2016 representing a decreased of 2,044 (-36.92%) compared to same month last year with 5,537 arrivals. PRC continues to be the overall leading market share by 38.44% amongst other countries with the direct charter flight between Palau and Hong Kong/Macau. Choices of carriers for PRC nationals in December are Palau Pacific Air, Asiana Airlines, China Air, Private Airlines, Delta Airlines and Korean Airlines, which sustained number of China passengers. Purpose of Entry by Nationality data indicates that Business recorded a 0.83% whereas Tourist recorded 99.17%.
- Japan with 2,794 arrivals in December 2016 represent a decreased of 499 (-15.15%) compared to same month last year with 3,293 arrivals. Purpose of Entry by Nationality data indicates that Business recorded at 1.07% whereas Tourist recorded 98.93%.
- ROC (Taiwan) with 790 arrivals in December 2016 compared to December 2015, it decreased by 171 (-17.79%). Purpose of Entry by Nationality data indicates that Business recorded 1.77% whereas Tourist recorded 98.23%.
- Korea with 1,195 arrivals in December 2016 represent a decreased of 14 (-1.19%) compared to same month last year with 1,181 arrivals. Compared to December 2015 arrivals. Purpose of Entry by Nationality data indicates that Business recorded a 0.42% whereas Tourist recorded 99.58%.
- North America with 760 arrivals in December 2016 representing a decreased of 32 (-4.04%) compared to same month last year with 792 arrivals. Purpose of Entry by Nationality indicates that Business recorded 5.39% whereas Tourist recorded 94.61%
- Total Europe including Russia with 491 arrivals in December represent an increase of 87 (21.53%) compared to December 2015 with 404 arrivals. Purpose of Entry by Nationality data indicates that Business recorded a 2.03% whereas Tourist recorded 97.96%

Indicated Action: PVA will still continue to monitor and recommend action plans for declining markets to recover visitor trends.

Visitor Arrivals by Mode of Transportation (excluding residents, students, employments, flight crews and transits)

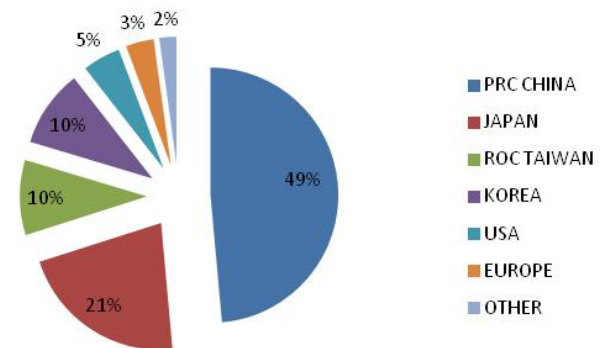
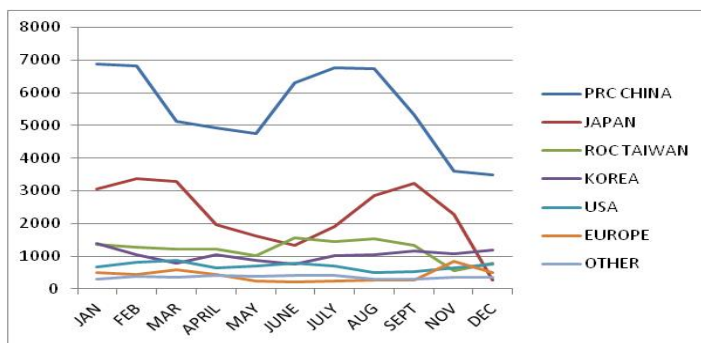
AIRLINES	ANA Airlines	Asiana Airlines	China Airlines	Delta Airlines	Japan Airlines	Korea Air	Lion Airline	Private Air	PPA	Totals
		1,394	1,042	1,359	233	853		141	3,001	
% of PRC nationals		21%	6%	0%		16%		44%	96%	
AIRLINES	United Air	F/V	S/Y							
	1,844	2	3						TOTAL	9,872
% of PRC nationals	2%		1%							

Conclusion:

- This month's visitors from China, Japan, Taiwan, US, Philippines and all other countries show a decrease; Korea, Europe and Micronesia show an increase.
- December Charter Airlines shows decrease in passengers compared to previous months. Most notable was Japanese, Taiwan and Chinese visitors.

Calendar Year 2016: with 9,872 December visitor number, the biggest sourcing country was PRC followed by Japan, Korea, ROC Taiwan, USA and European total.

2016	JAN	FEB	MAR	APRIL	MAY	JUNE	JULY	AUG	SEPT	OCT	NOV	DEC	2016 TOTAL	2015 TOTAL	IYA
PRC	6,889	6,808	5,128	4,933	4,760	6,294	6,765	6,750	5,326	4,237	3,607	3,493	64,990	87,058	-25%
JPN	3,050	3,368	3,294	1,967	1,627	1,332	1,905	2,867	3,221	1,532	2,281	2,794	29,238	31,016	-6%
ROC	1,357	1,264	1,232	1,206	1,019	1,578	1,463	1,537	1,323	616	549	790	13,934	14,174	-2%
KOR	1,392	1,038	782	1,047	864	758	1,021	1,057	1,169	1,029	1,089	1,195	12,441	12,327	1%
USA	682	828	862	657	692	782	699	488	537	792	643	760	8,422	8,752	-4%
EUR	504	440	583	437	239	221	235	275	276	446	855	491	5,002	4,380	14%
Other	309	388	371	420	401	418	406	309	315	335	360	349	4,381	4,224	4%
TTL	14,183	14,134	12,252	10,667	9,602	11,383	12,494	13,283	12,167	8,987	9,384	9,872	138,408	161,931	-15%



Effects of market in 2016:

- Airlines quit flying Lion Air, Thai Smile, Nok, Trans Asia, Dynamic, and Mega.
- Drought effected tourism during March, April and May.
- Jellyfish Lake is a popular attraction and no Jellyfish.
- China news about ban on tourism to Palau shows an effect on Chinese visitors.
- Questions over if Visa program has started and is needed and where to get Visa.

2015 Visitor Arrival For Each Market Group by NATIONALITY (BUSINESS, INVESTOR & VISITORS ONLY)

	JAN	FEB	MAR	APRIL	MAY	JUNE	JULY	AUG	SEPT	OCT	NOV	DEC	TOTAL
AUS / NZ	102	61	100	84	176	91	73	65	76	88	63	76	1,055
GERMANY	143	88	131	105	42	26	24	40	50	68	88	95	900
ITALY	58	49	67	10	22	8	20	49	14	9	19	64	389
JAPAN	3,188	2,801	3,375	2,490	2,301	1,425	1,739	2,981	2,760	2,103	2,560	3,293	31,016
KOREA	1,756	828	820	813	960	886	985	1,103	768	1,057	1,170	1,181	12,327
MICRONESIA	50	38	34	45	82	36	39	43	52	53	28	26	526
PHILIPPINES	86	64	92	91	132	77	85	186	76	108	75	112	1,184
PRC CHINA	7,896	10,955	7,355	7,004	6,840	6,772	7,333	9,073	6,747	6,484	5,062	5,537	87,058
ROC TAIWAN	1,253	1,763	1,409	896	1,051	947	1,198	1,196	939	1,389	1,172	961	14,174
RUSSIA	94	32	57	35	43	3	16	12	8	23	64	15	402
SWITZERLAND	30	41	31	27	24	8	27	14	18	16	40	18	294
UNITED KINGDOM	72	56	75	70	45	36	30	51	37	42	62	52	628
US MAINLAND	789	749	1,074	782	785	682	576	533	506	791	693	792	8,752
OTHER EUROPE	278	173	220	172	74	68	57	121	100	122	222	160	1,767
OTHERS	125	89	126	188	128	64	103	90	135	103	111	197	1,459
TOTAL	15,920	17,787	14,966	12,812	12,705	11,129	12,305	15,557	12,286	12,456	11,429	12,579	161,931

2016 Visitor Arrival For Each Market Group by NATIONALITY (BUSINESS, INVESTOR & VISITORS ONLY)

	JAN	FEB	MAR	APRIL	MAY	JUNE	JULY	AUG	SEPT	OCT	NOV	DEC	TOTAL	DEC 2016	DEC 2016	2016 YTD
														vs. DEC 2015	Market Share	vs. 2015 YTD
AUS / NZ	97	69	125	78	92	87	61	49	86	75	82	74	975	-2.63%	0.87%	-7.58%
GERMANY	122	120	117	80	52	32	50	48	44	97	142	99	1,003	4.21%	1.51%	11.44%
ITALY	33	35	52	17	7	30	14	47	24	27	53	32	371	-50.00%	0.56%	-4.63%
JAPAN	3,050	3,368	3,294	1,967	1,627	1,332	1,905	2,867	3,221	1,532	2,281	2,794	29,238	-15.15%	24.31%	-5.73%
KOREA	1,392	1,038	782	1,047	864	758	1,021	1,057	1,169	1,029	1,089	1,195	12,441	1.19%	11.60%	0.92%
MICRONESIA	39	67	23	28	48	77	124	60	41	44	20	30	601	15.38%	0.21%	14.26%
PHILIPPINES	79	97	90	71	94	76	109	84	77	96	105	102	1,080	-8.93%	1.12%	-8.78%
PRC CHINA	6,889	6,808	5,128	4,933	4,760	6,294	6,765	6,750	5,326	4,237	3,607	3,493	64,990	-36.92%	38.44%	-25.35%
ROC TAIWAN	1,357	1,264	1,232	1,206	1,019	1,578	1,463	1,537	1,323	616	549	790	13,934	-17.79%	5.85%	-1.69%
RUSSIA	70	25	58	54	24	2	9	1	8	23	21	39	334	160.00%	0.22%	-16.92%
SWITZERLAND	42	36	33	27	20	14	23	11	11	20	40	25	302	38.89%	0.43%	2.72%
UNITED KINGDOM	51	53	80	70	50	51	56	45	45	63	49	75	688	44.23%	0.52%	9.55%
US MAINLAND	682	828	862	657	692	782	699	488	537	792	643	760	8,422	-4.04%	6.85%	-3.77%
OTHER EUROPE	186	171	243	189	86	92	83	123	144	216	550	221	2,304	38.13%	5.86%	30.39%
OTHERS	94	155	133	243	167	178	112	116	111	120	153	143	1,725	-27.41%	1.63%	18.23%
TOTAL	14,183	14,134	12,252	10,667	9,602	11,383	12,494	13,283	12,167	8,987	9,384	9,872	138,408	-21.52%	100.00%	-14.53%

Count by Nationality

NORTH AMERICA	760	NORTH ASIA	3,989
Canada	64	Japan	2,794
U.S.A	693	Korea	1,195
Other	3	SOUTHEAST ASIA	184
CENTRAL AMERICA	-	Bangladesh	3
Honduras	-	India	22
Mexico	-	Indonesia	3
Other	-	Malaysia	9
SOUTH AMERICA	12	Philippines	102
Argentina	-	Singapore	27
Brazil	11	Sri Lanka	2
Ecuador	-	Thailand	5
Other	1	Nepal	4
EUROPE	491	Other	7
Austria	12	PEOPLE'S OF REPUBLIC OF CHINA	3,493
Belgium	1	China	3,493
Czech Republic	17	Hong Kong	-
Denmark	14	Other	-
Finland	5	ROC TAIWAN	790
France	51	PACIFIC	74
Germany	99	Australia	67
Italy	32	New Zealand	7
Netherlands	18	Other	-
Norway	-	SOUTH PACIFIC	7
Poland	7	Fiji	3
Portugal	1	Kiribati	-
Russia	39	Nauru	-
Spain	39	Solomon Islands	3
Sweden	8	Samoa	-
Switzerland	25	Tonga	1
United Kingdom	75	Vanuatu	-
Other Europe	48	Other	-
AFRICA (WHOLE REGION)	7	MICRONESIA	30
MIDDLE EAST	35	CNMI	-
Israel	30	FSM	29
Egypt	-	Marshall Islands	1
Lebanon	-	Palau	-
Iran	-	EMPLOYMENT	342
Other Middle East	5	OTHERS	220
		MISSIONARY	8
		OVERALL TOTAL:	10,442
		TOTAL BUSINESS & TOURIST:	9,872

PURPOSE OF ENTRY BY NATIONALITY

	Tourist	Business	Employment	Dependent	Other	TOTAL
EUROPE						
France	51	-	-	1	3	55
Germany	97	2	-	-	2	101
Italy	32	-	1	-	2	35
Russia	37	2	-	-	-	39
Switzerland	24	1	-	-	-	25
United Kingdom	72	3	2	-	3	80
Other Europe	168	2	1	3	7	181
ASIA						
China, PRC	3,464	29	63	2	29	3,587
Japan	2,764	30	48	10	13	2,865
Korea	1,190	5	10	3	21	1,229
Philippines	94	8	99	17	38	256
ROC Taiwan	776	14	52	2	7	851
Singapore	27	-	-	-	-	27
Other Asia	54	1	43	-	24	122
Australia/New Zealand	66	8	4	2	7	87
FSM	27	2	1	-	1	31
Marshall Island	1	-	1	-	-	2
USA/CANADA	719	41	13	5	23	801
Other	53	8	4	2	1	68
Purpose of Entry Total	9,716	156	342	47	181	
Overall Total	10,442					
Tourist & Business Total	9,872					

GENDER & AGE GROUP BY NATIONALITY

	Total	0-9yrs	10-17yrs	18-29yrs	30-39yrs	40-49yrs	50-59yrs	60 & Over
	10,442	458	310	2,508	2,628	2,115	1,719	704
FEMALE	5,210	224	155	1,526	1,281	949	757	318
MALE	5,232	234	155	982	1,347	1,166	962	386
	100%	4%	3%	24%	25%	20%	16%	7%

MODE OF TRASPORATION BY NATIONALITY

ASIANA REGULAR FLIGHT & CHARTER FLIGHTS

		Tourist	Business	Employment	Dependent	Other
Total:	1,429	1,384	10	18	1	16
AUSTRALIA/NEW ZEALAND	15	14	-	-	-	1
EUROPE	88	84	3	-	-	1
JAPAN	183	178	2	2	-	1
KOREA	765	753	3	7	-	2
PHILIPPINES	1	1	-	-	-	-
PRC CHINA	308	297	2	7	1	1
ROC TAIWAN	4	4	-	-	-	-
USA/CANADA	41	39	-	2	-	-
OTHER	24	14	-	-	-	10

CHINA AIRLINE

	Total	Tourist	Business	Employment	Dependent	Other
Total:	1,096	1,030	12	42	-	12
AUSTRALIA/NEW ZEALAND	10	7	-	1	-	2
EUROPE	69	66	-	1	-	2
JAPAN	42	41	-	1	-	-
KOREA	5	5	-	-	-	-
PHILIPPINES	2	-	-	2	-	-
PRC CHINA	68	66	1	1	-	-
ROC TAIWAN	784	736	11	32	-	5
USA/CANADA	103	98	-	4	-	1
OTHER	13	11	-	-	-	2

DELTA AIRLINES

	Total	Tourist	Business	Employment	Dependent	Other
Total:	1,396	1,345	14	22	7	8
AUSTRALIA/NEW ZEALAND	3	2	-	1	-	-
EUROPE	24	23	-	-	-	1
JAPAN	1,264	1,227	5	19	6	7
KOREA	7	7	-	-	-	-
PHILIPPINES	5	1	1	2	1	-
PRC CHINA	10	10	-	-	-	-
ROC TAIWAN	1	1	-	-	-	-
USA/CANADA	72	70	2	-	-	-
OTHER	10	4	6	-	-	-

KOREAN AIR

	Total	Tourist	Business	Employment	Dependent	Other
Total:	899	846	7	33	7	6
AUSTRALIA/NEW ZEALAND	3	1	-	-	2	-
EUROPE	131	122	2	2	-	5
JAPAN	133	128	-	5	-	-
KOREA	415	410	2	-	3	-
PHILIPPINES	-	-	-	-	-	-
PRC CHINA	158	132	1	23	1	1
ROC TAIWAN	-	-	-	-	-	-
USA/CANADA	32	30	2	-	-	-
OTHER	27	23	-	3	1	-

JAPAN AIRLINES (JAL)

		Tourist	Business	Employment	Dependent	Other
Total:	233	229	4	-	-	-
EUROPE	1	1	-	-	-	-
JAPAN	231	227	4	-	-	-
PRC CHINA	1	1	-	-	-	-

PRIVATE PLANES

		Tourist	Business	Employment	Dependent	Other
Total:	158	133	8	-	-	17
AUSTRALIA/NEW ZEALAND	6	1	4	-	-	1
EUROPE	10	7	-	-	-	3
JAPAN	1	1	-	-	-	-
KOREA	1	-	-	-	-	1
PHILIPPINES	5	5	-	-	-	-
PRC CHINA	67	61	3	-	-	3
ROC TAIWAN	12	11	1	-	-	-
USA/CANADA	53	44	-	-	-	9
OTHER	3	3	-	-	-	-

PALAU PACIFIC AIRWAYS

		Tourist	Business	Employment	Dependent	Other
Total:	3,064	2,980	21	48	-	15
AUSTRALIA/NEWZEALAND	11	11	-	-	-	-
EUROPE	14	14	-	-	-	-
JAPAN	-	-	-	-	-	-
KOREA	6	3	-	2	-	1
PHILIPPINES	1	1	-	-	-	-
PRC CHINA	2,929	2,864	19	32	-	14
ROC TAIWAN	38	22	2	14	-	-
USA/CANADA	50	50	-	-	-	-
OTHER	15	15	-	-	-	-

UNITED AIRLINES

	Total	Tourist	Business	Employment	Dependent	Other
Total:	2,091	1,764	80	168	32	47
AUSTRALIA/NEW ZEALAND	35	29	4	2	-	-
EUROPE	178	164	5	1	4	4
JAPAN	1,011	962	19	21	4	5
KOREA	13	12	-	1	-	-
PHILIPPINES	227	86	7	95	16	23
PRC CHINA	37	32	3	-	-	2
ROC TAIWAN	7	2	-	3	2	-
USA/CANADA	447	386	37	7	5	12
OTHER	136	91	5	38	1	1

FISHING VESSEL

		Tourist	Business	Employment	Dependent	Other
Total:	65	2	-	8	-	55
KOREA	17	-	-	-	-	17
PHILIPPINES	15	-	-	-	-	15
PRC CHINA	9	1	-	-	-	8
ROC TAIWAN	5	-	-	3	-	2
OTHER	19	1	-	5	-	13

SAIL YATCH

	Total	Tourist	Business	Employment	Dependent	Other
Total:	8	3	-	-	-	5
AUSTRALIA/NEW ZEALAND	4	1	-	-	-	3
EUROPE	1	-	-	-	-	1
PHILIPPINES	-	-	-	-	-	-
PRC CHINA	-	-	-	-	-	-
USA/CANADA	3	2	-	-	-	1
OTHER	-	-	-	-	-	-

T/G VESSEL

	Total	Tourist	Business	Employment	Dependent	Other
Total:	3	-	-	3	-	-
AUSTRALIA/NEW ZEALAND	-	-	-	-	-	-
EUROPE	-	-	-	-	-	-
PHILIPPINES	-	-	-	-	-	-
PRC CHINA	-	-	-	-	-	-
USA/CANADA	-	-	-	-	-	-
OTHER	3	-	-	3	-	-

GRAND TOTAL:	10,442	9,716	156	342	47	181
---------------------	---------------	--------------	------------	------------	-----------	------------

ADDRESS IN PALAU BY NATIONALITY

TOURIST & BUSINESS

ADDRESS IN PALAU	Total:	TOURIST	BUSINESS
	9,872	9,716	156
AIRAI FOREST VILLA	25	25	-
AIRAI VIEW ANNEX	-	-	-
AIRAI WATER PARADISE	489	487	2
ALIIBAMOU RESORT	24	24	-
BAYSIDE BED&BREAKFAST	12	12	-
BLUE CORNER HOSTLE	72	71	1
BLUE OCEAN VIEW HOTEL	257	254	3
CARP ISLAND RESORT	56	56	-
CLIFFSIDE HOTEL	103	103	-
COCO BEACH RESORT	1	1	-
COCORO HOTEL	27	27	-
COMFORT SUITE HOTEL	7	6	1
COVE RESORT PALAU	232	221	11
DECEMBER HOTEL	48	47	1
DOLPHIN BAY	2	2	-
DW MOTEL	131	130	1
GARDEN PALACE HOTEL	103	102	1
GREEN BAY HOTEL	31	31	-
GUEST LODGE	38	31	7
HARVEST HOTEL	12	12	-
HI-RESORT (BOUTIQUE 7)	154	153	1
HK MOTEL	5	5	-
HOUSE INN	-	-	-
ISLAND PARADISE RESORT CLUB	201	200	1
ISLAND TERRACE	-	-	-
ISLAND VIEW MOTEL	-	-	-
ISLAND VILLAS BEACH	-	-	-
KINGS MOTEL	17	17	-
LANDMARK MARINA HOTEL	51	51	-
LEHNS MOTEL	15	15	-
LIGHT HOUSE HOTEL/TOWER	116	115	1
M&A RIVERSIDE BEACH	22	22	-
MAYUMI'S INN	-	-	-
MCS MOTEL	9	9	-
MK HOTEL	68	68	-
NEMO HOTEL	215	214	1
NGELLIL NATURE RESORT	-	-	-
OCEAN HUNTER	5	5	-
PALASIA HOTEL	822	804	18
PALAU AGGRESSOR	35	35	-
PALAU BEACH BUNGALOW	1	1	-

OTHER	436	408	28
PALAU CENTRAL HOTEL	110	107	3
PALAU HOTEL	-	-	-
PALAU MARINE CLUB	61	60	1
PALAU PACIFIC RESORT	1,645	1,636	9
PALAU PARADISE HOTEL	223	220	3
PALAU PLANTATION RESORT	150	149	1
PALAU ROYAL RESORT	1,324	1,313	11
PALAU SIREN	17	17	-
PALAU SPORTS	14	14	-
PALAU SUNNY GARDEN	22	22	-
PALAU VACATION HOTEL	667	661	6
PAPAGO	340	338	2
PENTHOUSE HOTEL	116	93	23
PINE TREE HOSTLE	31	31	-
REIKO'S INN	2	2	-
ROSE GARDEN	54	54	-
RYOMA-LIVE ABOARD	31	30	1
SEA PASSION	620	618	2
SHELL VILLA	27	27	-
SOLITUDE ONE	-	-	-
STORYBOARD RESORT	-	-	-
TROPIC DANCER	3	3	-
VIP HOTEL	137	134	3
WENTY'S SUNSET INN	-	-	-
WEST PLAZA BY THE SEA	118	111	7
WEST PLAZA CORAL REEF	9	9	-
WEST PLAZA DESEKEL	98	97	1
WEST PLAZA DOWNTOWN	102	100	2
WEST PLAZA MALAKAL	92	89	3
YUHI MOTEL	17	17	-